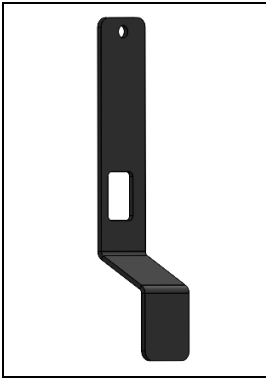


ADA Pull Handle – 40000 Series Premier Lockers Installation Instructions

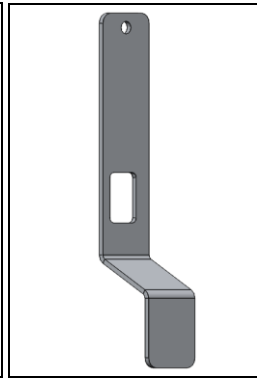
Thank you for selecting the Salsbury ADA Pull Handle. These instructions provide a step-by-step guide for replacing or installing the handle behind a battery-powered electronic lock, ensuring proper alignment and secure installation.

Important:

- Maintain support of the electronic lock and battery assembly during screw removal and installation to avoid damage.
- Ensure proper alignment before tightening mounting screws to prevent misalignment.



Black ADA Pull Handle



Silver ADA Pull handle



ADA Pull Handle Assembly



Step 1: Unlock the Locker Door

Enter the access code to unlock the locker door.



Step 2: Remove the Battery Cover

Using a PH1 Phillips screwdriver, remove the screw securing the battery cover.



Step 3: Remove the Batteries

Carefully remove the batteries.



Step 4: Remove the Internal Top Screw

Remove the internal top screw using a 3mm Allen wrench.



Step 5: Remove the External Bottom Screw

Support the electronic lock and battery assembly securely. Using a 3mm Allen wrench, remove the external bottom screw.



Step 6: Disconnect the Wiring from Battery

While supporting the electronic lock, disconnect the electronic lock wiring from the battery.



Step 7: Install the ADA Pull Handle

Thread the electronic lock wiring through the opening in the ADA pull handle and the pre-drilled hole in the door.

SALSBURY INDUSTRIES

18300 Central Avenue, Carson, CA 90746-4008

Phone: 1-800-562-5377

Int'l Phone: 323-846-6700

Fax: 1-800-562-5399

Int'l Fax: 323-846-6800

www.lockers.com

engineering@lockers.com



Step 8: Reconnect the Wiring to Battery
While supporting the electronic lock and ADA pull handle, reconnect the wiring to the battery.



Step 9: Tighten the External Bottom Screw
Verify the alignment of the ADA pull handle, then tighten the external bottom screw using a 3mm Allen wrench to secure the assembly.



Step 10: Tighten the Internal Top Screw
Confirm proper alignment is maintained. Tighten the internal top screw using a 3mm Allen wrench.



Step 11: Install the Batteries
Reinsert the batteries and verify that the electronic lock powers on correctly.



Step 12: Reinstall the Battery Cover
Reinstall the battery cover using a PH1 Phillips screwdriver. Confirm all the components are properly installed.



Step 13: Evaluate the ADA Pull Handle
Verify that the ADA pull handle is securely installed and operates smoothly.

SALSBURY INDUSTRIES

18300 Central Avenue, Carson, CA 90746-4008
Phone: 1-800-562-5377 Int'l Phone: 323-846-6700
Fax: 1-800-562-5399 Int'l Fax: 323-846-6800
www.lockers.com engineering@lockers.com