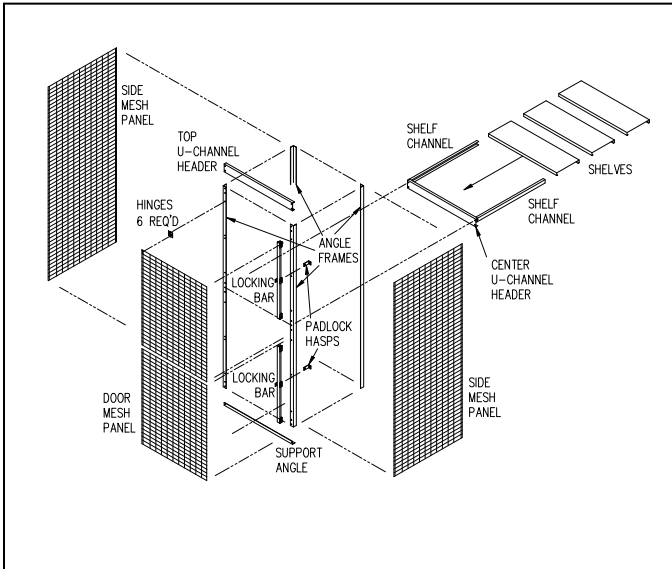


Storage Lockers – 8200 Series

Double Tier Installation Instructions

Thank you for selecting Salsbury's double tier storage lockers. We are confident that the quality and construction of the lockers will prove to be a good investment. These instructions are intended to assist you in a double tier storage locker or a double tier storage locker with add-on units. Individual job conditions will dictate the type of fasteners and whether the lockers must be anchored to the wall, the floor, or both.

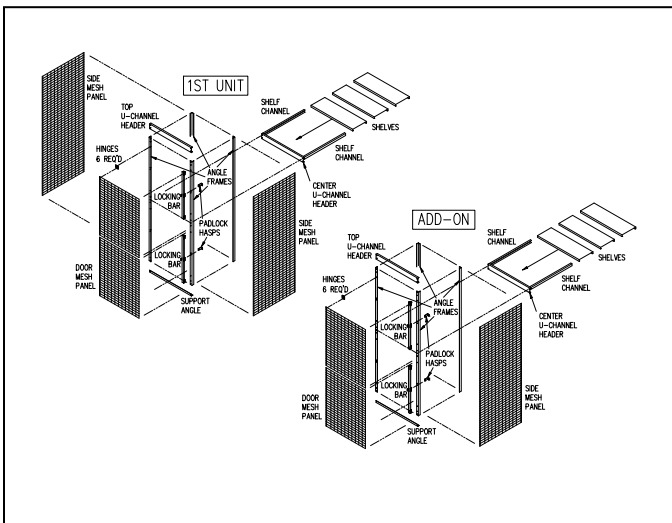
Typical Assembly – Double Tier Starter



Instructions – Double Tier Starter

1. Set (2) two holed angle frames in vertical position as your left front and right front frame. Attach u-channel header on corners inside of (2) two front angle frames. Attach bolts, washers and nuts on both corners and tighten.
2. Attach support angle bar to the bottom left and right corners inside of front frames. Bolt and nut together and tighten.
3. Attach left side mesh panel inside of the front left angle and right side mesh panel inside of the front right angle. Attach u-channel header in the middle position inside front angle frames. Attach shelf channels to inside of left and right side mesh panels. Slide shelves into shelf channels from the rear of the unit. Set slotted angle frame as the left rear frame, in line with left front frame and attach to outside of left side mesh panel. Repeat for right side. Bolt and nut together and tighten. Continue with step 4 for both top and bottom units.
4. Attach (3) three hinges inside front left angle frame, bolt and nut together and tighten. In upright position, set the left side of mesh door panel to the other side of hinges. Bolt and nut together and tighten. Attach padlock hasp and hinged anti-pry locking bar to right front angle frame (set angle frame between padlock hasp & locking bar). Bolt and nut together and tighten.

Typical Assembly – Double Tier Add-On



Instructions – Double Tier with Add-On

1. Set (2) two holed angle frames in vertical position as your left front and right front frame. Attach u-channel header on corners inside of (2) two front angle frames. Attach bolts, washers and nuts on both corners and tighten.
2. Attach support angle bar to the bottom left and right corners inside of front frames. Bolt and nut together and tighten.
3. Set 1 round hole angle frame back-to-back with front right angle frame as the center front frame and set center mesh panel perpendicular to center front frame. Bolt and nut the mesh panel to the inside of the center front frame. Set 1 round hole angle frame in vertical position as the right front angle and attach 1 u-channel header to the inside of top front center angle and top front right angle then attach 1 u-channel header in the middle position inside front center angle and front right and bottom front right angle. Attach left side mesh panel inside of the front left angle and right side mesh panel inside of the front right angle. Attach shelf channels inside of left side and center mesh panels, repeat for right side and center mesh panels. Slide shelves into shelf channels from the rear of the unit. Set 2 slotted angle frames back-to-back as the center rear frame in line with the center front frame. Bolt and nut the center mesh panel to the inside of the angle frame. Set slotted angle frame as the left rear frame, in line with left front frame and attach to outside of left side mesh panel. Repeat for right side. Bolt and nut together and tighten. **Continue with STEP 4 (above) for both left unit and top and bottom of right unit.**

Notes

All bolted connections should be finger tight initially. Square locker before tightening all connections.

Adjust all doors to operate freely if required.

SALSBURY INDUSTRIES

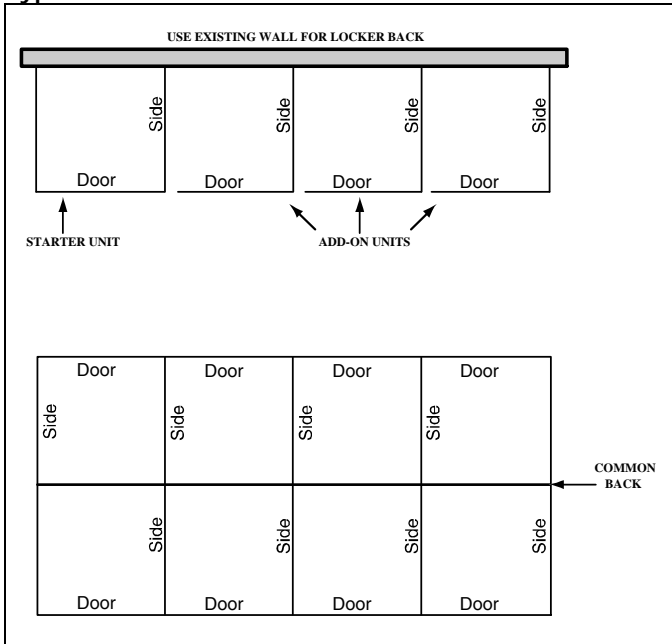
1010 East 62nd Street, Los Angeles, CA 90001-1598
 Phone: 1-800-562-5377 Int'l Phone: 323-846-6700
 Fax: 1-800-562-5399 Int'l Fax: 323-846-6800
 www.lockers.com engineering@lockers.com

Installation instructions are provided as general guidelines. It is advised that a professional installer be consulted. Salsbury Industries assumes no product assembly or installation liability. Copyright © 2009 Salsbury Industries. All rights reserved. (Rev. 02, 4/8/2009)

Storage Lockers – 8100 and 8200 Series Installation Instructions

Thank you for selecting Salsbury's storage lockers. We are confident that the quality and construction of the lockers will prove to be a good investment. These instructions are intended to assist you in a single or double tier storage locker installation. Individual job conditions will dictate the type of fasteners and whether the lockers must be anchored to the wall, the floor, or both.

Typical Installations – Starter Unit and Add-On



Notes

All bolted connections should be finger tight initially. Square locker before tightening all connections.

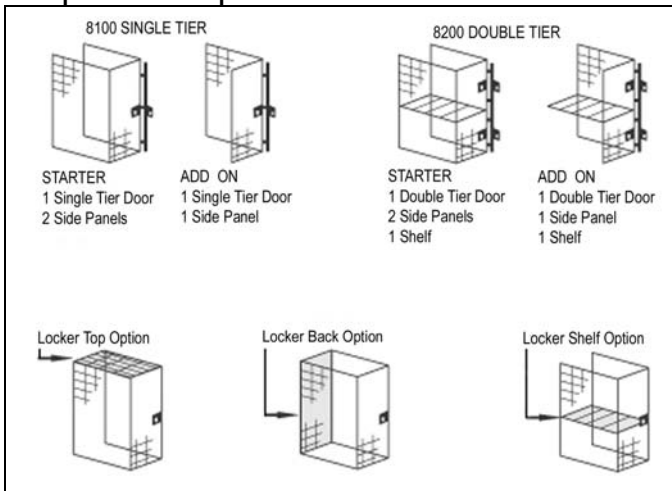
Adjust all doors to operate freely if required.

Installation Instructions

Begin with a starter unit and then simply attach add-on units, tops, backs and shelves as needed. Combine single and double tier units to form any grouping.

Refer to the individual instruction sheet for assembly of Single Tier Storage Lockers or Double Tier Storage Lockers, including add-on units.

Components & Options



SALSBURY INDUSTRIES

1010 East 62nd Street, Los Angeles, CA 90001-1598
 Phone: 1-800-562-5377 Int'l Phone: 323-846-6700
 Fax: 1-800-562-5399 Int'l Fax: 323-846-6800
 www.lockers.com engineering@lockers.com