

Aluminum Locker Benches

ALUMINUM LOCKER BENCHES

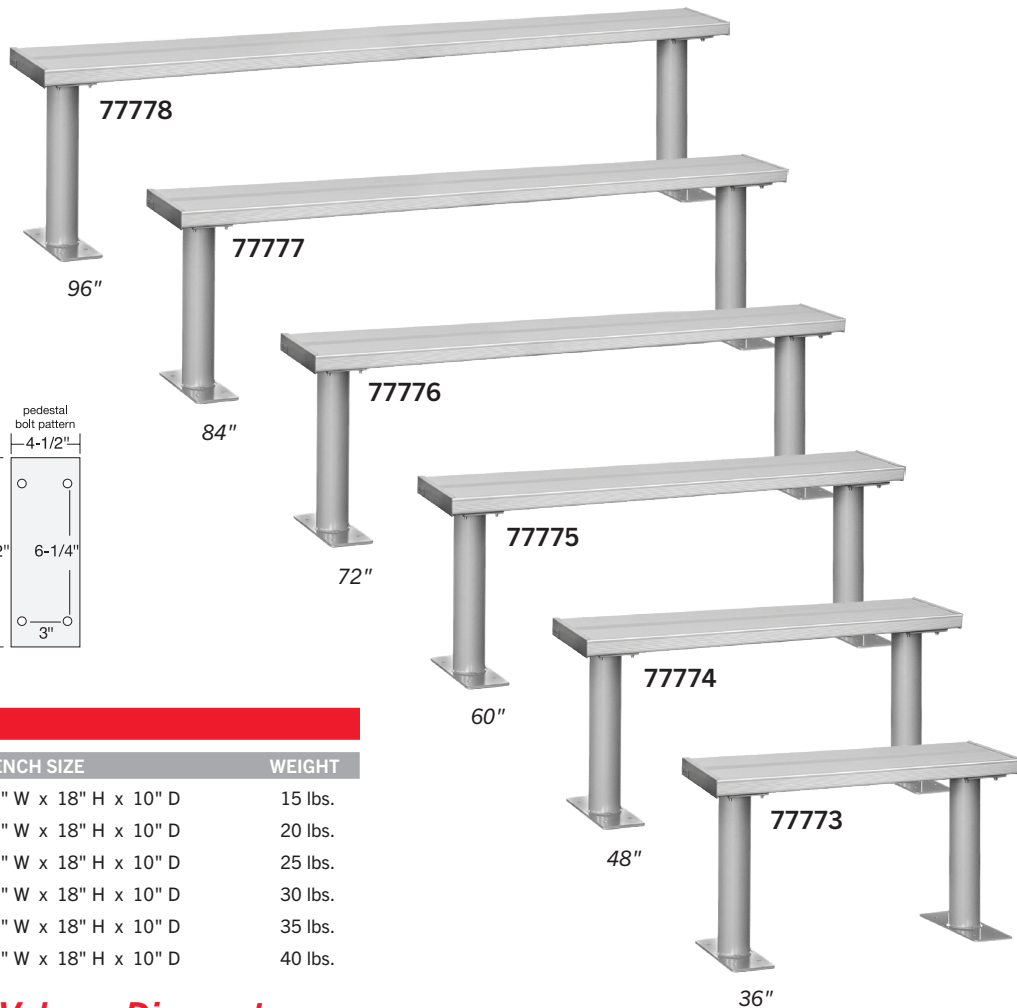
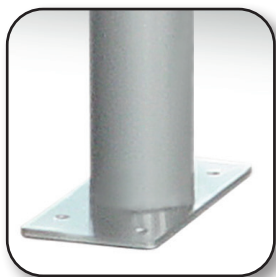
Constructed entirely of aluminum, Salsbury aluminum locker benches combine a traditional look with strength and durability and are an excellent addition to industrial, office or recreational locker room facilities. The anodized aluminum seating area is 1-3/4" thick and features rounded edges for comfortable seating. Aluminum locker benches are available in six (6) lengths ranging from 36" to 96" in one foot increments and are easily assembled. Each bench is 18" H x 10" D and includes two (2) 3" diameter bolt mounted pedestals with four (4) mounting holes to secure to the ground. Pedestals feature a durable powder coated aluminum finish. Minor assembly is required.



84" aluminum locker bench (#77777) displayed



84" aluminum locker benches (#77777) and aluminum ADA locker bench (#77771-ADA) displayed



ALUMINUM LOCKER BENCHES

MODEL	DESCRIPTION	BENCH SIZE	WEIGHT
77773	36" (3 feet) Bench	36" W x 18" H x 10" D	15 lbs.
77774	48" (4 feet) Bench	48" W x 18" H x 10" D	20 lbs.
77775	60" (5 feet) Bench	60" W x 18" H x 10" D	25 lbs.
77776	72" (6 feet) Bench	72" W x 18" H x 10" D	30 lbs.
77777	84" (7 feet) Bench	84" W x 18" H x 10" D	35 lbs.
77778	96" (8 feet) Bench	96" W x 18" H x 10" D	40 lbs.

Current Pricing and Volume Discounts Available at Lockers.com!

Note: It is recommended that all benches be floor anchored.

ALUMINUM ADA LOCKER BENCHES

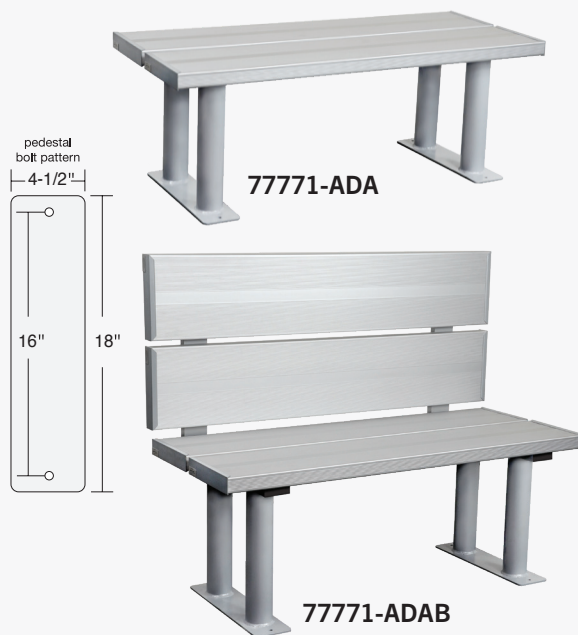


Salsbury aluminum ADA locker benches combine a traditional look with strength and durability and are an excellent addition to facilities that require accessibility. Constructed entirely of aluminum, the anodized seating area is 1-3/4" thick, 20" deep, 42" or 48" wide and 18" high. Aluminum ADA locker benches are available in two (2) configurations, one with back support (39" high) and one without back support (18" high). Aluminum ADA locker benches with back supports can be placed in an open area while those without back supports are designed to be installed flush against a wall. Each seating area meets ADA requirements and include four (4) 3" diameter bolt mounted pedestals with two (2) mounting holes to secure to the ground. Pedestals feature a durable powder coated aluminum finish. Minor assembly is required.

ALUMINUM ADA LOCKER BENCHES

MODEL	DESCRIPTION	BENCH SIZE	WEIGHT
77771-ADA	42" ADA Bench	42" W x 18" H x 20" D	45 lbs.
77771-ADAB	42" ADA Bench with back support	42" W x 39" H x 23" D	85 lbs.
77772-ADA	48" ADA Bench	48" W x 18" H x 20" D	50 lbs.
77772-ADAB	48" ADA Bench with back support	48" W x 39" H x 23" D	95 lbs.

Note: It is recommended that all benches be floor anchored.



Wood Locker Benches

WOOD LOCKER BENCHES

Constructed of 1-1/4" thick solid butcher block wood, Salsbury wood locker benches combine a classic look with strength and durability and are an excellent addition to industrial, office or recreational locker room facilities. Wood locker benches are available in six (6) lengths ranging from 36" to 96" in one foot increments and are easily assembled. The wood seating area is 1-1/4" thick and available in a light finish or a dark finish. Each bench is 18" H x 9-1/2" D and includes two (2) 3" diameter bolt mounted aluminum pedestals with four (4) mounting holes to secure to the ground. Pedestals feature a durable powder coated black finish. Minor assembly is required.

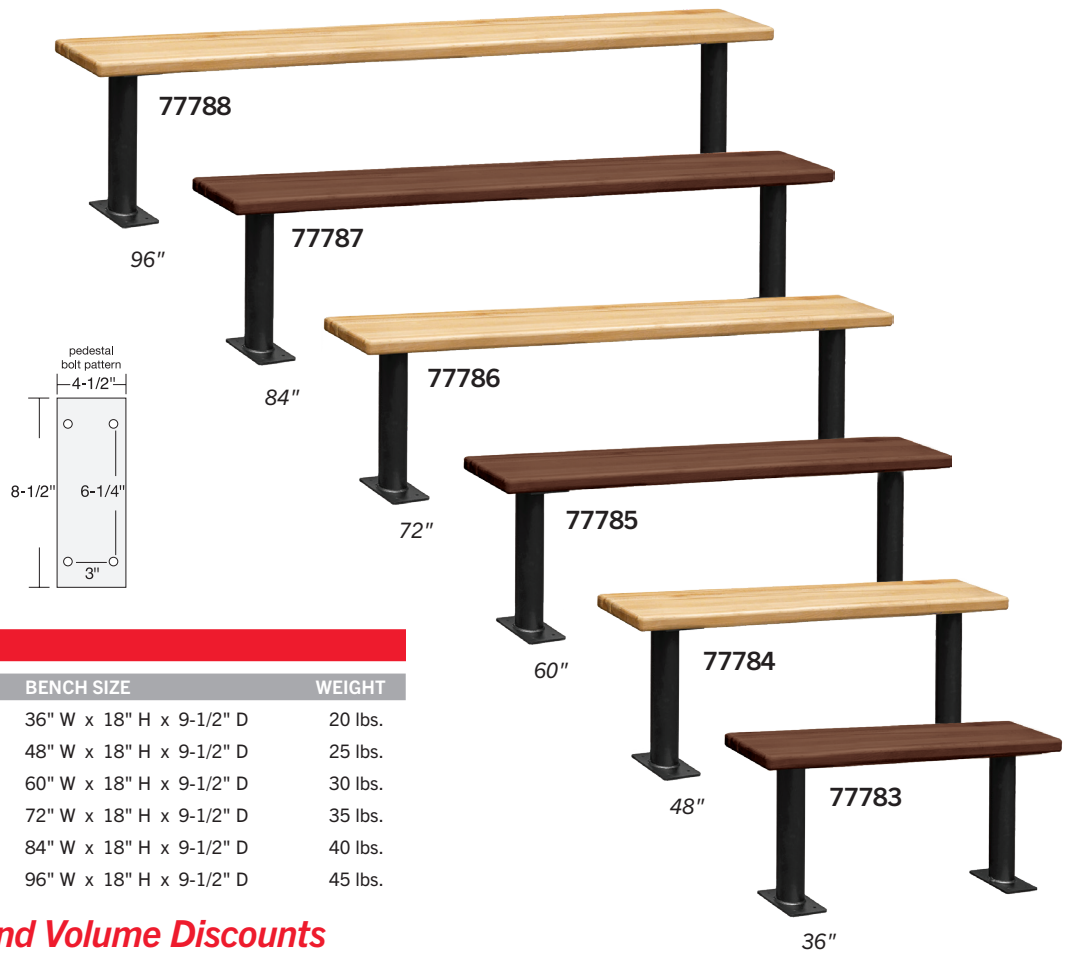
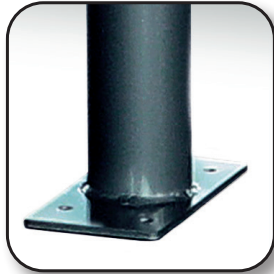


72" wood locker bench (#77786)
in light finish displayed



**Constructed of
Solid Butcher
Block Wood**

72" wood locker bench (#77786) and wood ADA locker bench with
back support (#77781-ADAB) in dark finish displayed



WOOD LOCKER BENCHES

MODEL	DESCRIPTION	BENCH SIZE	WEIGHT
77783 ¹	36" (3 feet) Bench	36" W x 18" H x 9-1/2" D	20 lbs.
77784 ¹	48" (4 feet) Bench	48" W x 18" H x 9-1/2" D	25 lbs.
77785 ¹	60" (5 feet) Bench	60" W x 18" H x 9-1/2" D	30 lbs.
77786 ¹	72" (6 feet) Bench	72" W x 18" H x 9-1/2" D	35 lbs.
77787 ¹	84" (7 feet) Bench	84" W x 18" H x 9-1/2" D	40 lbs.
77788 ¹	96" (8 feet) Bench	96" W x 18" H x 9-1/2" D	45 lbs.

Current Pricing and Volume Discounts Available at Lockers.com!

Note: It is recommended that all benches be floor anchored.

WOOD ADA LOCKER BENCHES



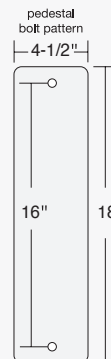
Salsbury wood ADA locker benches combine a traditional look with strength and durability and are an excellent addition to facilities that require accessibility. Constructed of solid butcher block wood, the seating area is 1-1/4" thick, 20" deep, 42" or 48" wide and 18" high. Wood ADA locker benches are available in two (2) configurations, one with back support (39" high) and one without back support (18" high). Wood ADA locker benches with back supports can be placed in an open area while those without back supports are designed to be installed flush against a wall. Each seating area meets ADA requirements and include four (4) 3" diameter bolt mounted pedestals with two (2) mounting holes to secure to the ground. Pedestals feature a durable powder coated black finish. Minor assembly is required.



77781-ADA



77781-ADAB



WOOD ADA LOCKER BENCHES

MODEL	DESCRIPTION	BENCH SIZE	WEIGHT
77781-ADA ¹	42" ADA Bench	42" W x 18" H x 20" D	50 lbs.
77781-ADAB ¹	42" ADA Bench with back support	42" W x 39" H x 23" D	90 lbs.
77782-ADA ¹	48" ADA Bench	48" W x 18" H x 20" D	55 lbs.
77782-ADAB ¹	48" ADA Bench with back support	48" W x 39" H x 23" D	100 lbs.

Note: It is recommended that all benches be floor anchored.

¹ Specify



light finish



dark finish