

Designer Storage Cabinets

DESIGNER WOOD STORAGE CABINETS STANDARD, WARDROBE AND COMBINATION

Constructed of medium-density fibreboard (MDF) and covered with durable high pressure laminate on the doors and the sides, Salsbury fully assembled 3000 series designer wood storage cabinets are ideal for settings where a professional environment is desired. Designer wood storage cabinets feature two (2) 16" W x 3/4" D doors and are available in a gray, blue, black, maple, cherry or mahogany finish. Optional matching laminated sloping hoods easily attach to the top of designer wood storage cabinets and prevent items from being stored or hidden on top of the unit. Standard designer wood storage cabinets are available in 18" depths (#3078) and 24" depths (#3074) and include fixed top and bottom 31" wide shelves and six (6) adjustable 15" wide shelves. Shelves can accommodate contents up to 180 pounds per shelf evenly distributed. Wardrobe designer wood storage cabinets (#3174) are 24" deep and include fixed top and bottom 31" wide shelves and two (2) 15" wide coat rods that can accommodate full length garments. Combination designer wood storage cabinets (#3274) are 24" deep and include fixed top and bottom 31" wide shelves, three (3) adjustable 15" wide shelves and a 15" wide coat rod that can accommodate full length garments. Designer wood storage cabinets include a 4" high black base and measure six (6) feet high (add 4" for the base). Designer wood storage cabinets include heavy duty, wide angle concealed hinges and a lift up handle and recessed hasp for added security – built-in locks (#3010 for combination and #3015 for key), padlocks (#3020 for combination and #3025 for key), electronic locks (#3090) and resettable combination locks (#3095) are available as options upon request - see designer wood storage cabinet options and locks on page 117.

DESIGNER WOOD STORAGE CABINET OPTIONS

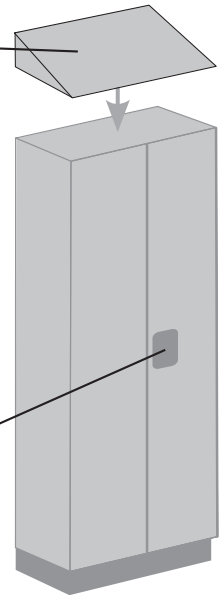
SLOPING HOOD

Note: Optional sloping hoods sold separately.

Designer Wood Storage Cabinets include heavy duty, wide angle concealed hinges and a lift up handle and recessed hasp for added security. The recessed hasp can accommodate built-in locks (#3010 for combination and #3015 for key), padlocks (#3020 for combination and #3025 for key), electronic locks (#3090) and resettable combination locks (#3095).



Lift up handle and recessed hasp



Ideal for settings where a professional environment is desired

See **ALL benches** on pages 106-111

See **matching designer wood lockers** on pages 62-87

**Volume Discount Pricing
Available at [Lockers.com!](http://Lockers.com)**



#3078's with optional sloping hoods (#3058) and built-in electronic locks (#3090) displayed

DESCRIPTION

3078¹ - 18" Deep Standard Designer Wood Storage Cabinet
6 adjustable shelves

UNIT SIZE

32" W x 72" H x 18" D
(76" H with base)

WEIGHT

275 lbs.

PRICE

\$925.00



3078

DESCRIPTION

3074¹ - 24" Deep Standard Designer Wood Storage Cabinet
6 adjustable shelves

UNIT SIZE

32" W x 72" H x 24" D
(76" H with base)

WEIGHT

325 lbs.

PRICE

\$950.00



3074

DESCRIPTION

3174¹ - 24" Deep Wardrobe Designer Wood Storage Cabinet
2 coat rods

UNIT SIZE

32" W x 72" H x 24" D
(76" H with base)

WEIGHT

275 lbs.

PRICE

\$925.00



3174

DESCRIPTION

3274¹ - 24" Deep Combination Designer Wood Storage Cabinet
3 adjustable shelves and one coat rod

UNIT SIZE

32" W x 72" H x 24" D
(76" H with base)

WEIGHT

300 lbs.

PRICE

\$975.00



3274

DESIGNER WOOD STORAGE CABINET OPTIONS & LOCKS

MODEL	DESCRIPTION	PRICE
3058 ¹	Sloping hood - for 18" D storage cabinet	\$90.00
3054 ¹	Sloping hood - for 24" D storage cabinet	\$100.00
3010	Built-in lock - combination style	\$15.00
3011	Master control key - for built in combination lock #3010	\$10.00
3015	Built-in-lock - key style with (2) keys	\$15.00
3016	Master control key - for built in key lock #3015	\$10.00
3020	Padlock - combination style	\$10.00
3021	Master control key - for combination padlock #3020	\$10.00
3025	Padlock - key style with (2) keys	\$10.00
3029	Key blanks - for key padlocks #3025	\$35.00
3090	Electronic lock (specify: silver, black or gold finish)	\$65.00
3095	Resettable combination lock (specify: silver or black finish)	\$30.00
3096	Master control key - for resettable combination lock #3095	\$10.00
3005	Ventilation grill	\$30.00
3006	Coat rod - 15 inches wide	\$20.00
3007	Lockable interior compartment	\$60.00
3017	Wire pull - gold finish	\$10.00
3018	Knob pull - gold finish	\$10.00

LOCKS



#3010
Built-in
combination lock
\$15.00



#3015
Built-in key lock
with (2) keys
\$15.00



#3020
Combination
padlock
\$10.00



#3025
Key padlock
with (2) keys
\$10.00

Electronic locks are programmable for a fixed combination or a combination that can be reset after each use.



#3090
Electronic lock
(silver, black or gold finish)
\$65.00

Resettable combination locks can be set to a fixed combination or a combination that can be reset after each use.

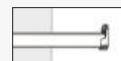


#3095
Resettable
combination lock
(silver or black finish)
\$30.00

ACCESSORIES



#3005
Ventilation
grill
\$30.00



#3006
Coat
rod
\$20.00



#3017
Wire
pull
\$10.00



#3018
Pull
knob
\$10.00



#3007
Lockable Interior
compartment
\$60.00

¹ Specify



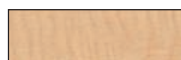
gray



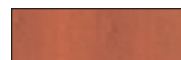
blue



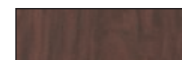
black



maple



cherry



mahogany