

18" Wide Designer Lockers Triple Tier & Four Tier

18" WIDE DESIGNER WOOD LOCKERS TRIPLE TIER AND FOUR TIER

Constructed of industrial grade wood and covered with durable high pressure laminate, Salsbury 18-23000 and 18-24000 series 18" wide triple tier and four tier designer wood lockers offer ample space for personal storage needs and are ideal for settings where a professional environment is desired. These spacious 18" wide designer wood lockers feature a gray, blue, black, maple, cherry or mahogany finish and are available in 18", 21" and 24" depths. Optional matching laminated sloping hoods and side panels easily attach to 18" wide designer lockers and provide a finished look to an individual locker or a row of lockers. 18" wide designer wood lockers include a 4" high black base and measure six (6) feet high (add 4" for the base). All locker doors are 18" W x 3/4" D and include a black name / number plate (custom engraving #33360 is available as an option upon request). All locker doors also feature heavy duty concealed hinges and include a lift up handle and recessed hasp for padlocks, resettable combination locks (black or silver finish) or electronic locks (black or silver finish). Other built-in lock options can be accommodated upon request. One wide designer lockers are available as fully assembled units only. Three (3) wide designer lockers are also available as fully assembled units only and require minor assembly - see all designer locker options and locks on pages 64-65.

**Current Pricing and Volume Discounts
Available at Lockers.com!**

DESIGNER LOCKER OPTIONS

SLOPING HOOD

SIDE PANEL

Each **triple tier designer** locker compartment includes a 5" deep shelf and a double prong ceiling hook.

Each **four tier designer** locker compartment is unobstructed for maximum storage space.

Compartment sizes:

- 16-3/4" W for all lockers
- 22-3/4" H for triple tier lockers
- 17" H for four tier lockers
- 16-3/4" D for 18" deep lockers
- 19-3/4" D for 21" deep lockers
- 22-3/4" D for 24" deep lockers

(Triple Tier Displayed)

Note: Optional sloping hoods and side panels are sold separately.

It is recommended that all lockers be wall and/or floor anchored.

LOCKING SYSTEMS



Recessed hasps can accommodate keyed and combination padlocks.



Resettable combination locks can be set to a fixed combination or a combination that can be reset after each use.



Electronic locks are programmable for a fixed combination or a combination that can be reset after each use.

See **ALL** designer locker options and locks on pages 64-65
See **ALL** benches on pages 74-75



#18-24361's with optional sloping hoods (#22831), side panels (#33336), combination padlocks (#33320), engraved name / number plates (#33360) and aluminum locker benches (#77778) displayed

6' HIGH TRIPLE TIER LOCKERS

18" WIDE TRIPLE TIER - SIX FEET HIGH - ONE WIDE

MODEL	UNIT SIZE	WEIGHT
ONE WIDE - (76" H with base)		Compartment Size* : 16-3/4" W x 22-3/4" H
18-23168 ^{1,2}	18" W x 72" H x 18" D	125 lbs.
18-23161 ^{1,2}	18" W x 72" H x 21" D	140 lbs.
18-23164 ^{1,2}	18" W x 72" H x 24" D	155 lbs.

18" WIDE TRIPLE TIER - SIX FEET HIGH - THREE WIDE

MODEL	UNIT SIZE	WEIGHT
THREE WIDE - (76" H with base)		Compartment Size* : 16-3/4" W x 22-3/4" H
18-23368 ^{1,2}	54" W x 72" H x 18" D	375 lbs.
18-23361 ^{1,2}	54" W x 72" H x 21" D	420 lbs.
18-23364 ^{1,2}	54" W x 72" H x 24" D	465 lbs.



18-23161



18-23361

Designer Lockers displayed
with optional side panels
(side panels sold separately)

6' HIGH FOUR TIER LOCKERS

18" WIDE FOUR TIER - SIX FEET HIGH - ONE WIDE

MODEL	UNIT SIZE	WEIGHT
ONE WIDE - (76" H with base)		Compartment Size* : 16-3/4" W x 17" H
18-24168 ^{1,2}	18" W x 72" H x 18" D	130 lbs.
18-24161 ^{1,2}	18" W x 72" H x 21" D	145 lbs.
18-24164 ^{1,2}	18" W x 72" H x 24" D	160 lbs.

18" WIDE FOUR TIER - SIX FEET HIGH - THREE WIDE

MODEL	UNIT SIZE	WEIGHT
THREE WIDE - (76" H with base)		Compartment Size* : 16-3/4" W x 17" H
18-24368 ^{1,2}	54" W x 72" H x 18" D	390 lbs.
18-24361 ^{1,2}	54" W x 72" H x 21" D	435 lbs.
18-24364 ^{1,2}	54" W x 72" H x 24" D	480 lbs.



18-24161



18-24361

* Compartment depth is 1-1/4" less than overall unit depth.

¹ Specify



gray



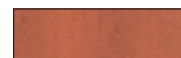
blue



black



maple



cherry




mahogany

² Specify - recessed hasps, resettable combination locks (black or silver finish) or electronic locks (black or silver finish)

Designer Locker Options & Locks

for lockers on pages 52-63



 For ADA Compliance Guidelines Visit:
www.lockers.com/ADA-Designer-Wood-Lockers

Design Assistance

Our design engineers and sales professionals are available to guide you through the process of designing a locker room and selecting the appropriate lockers for your application. Visit the informative architectural resources section of our website at: www.lockers.com/architectural-resources to download product information, 3D Revit/BIM models, Augmented Reality (AR) models, detailed specifications, technical drawings and installation instructions. You can also submit required layout and options for a price quotation.

SLOPING HOODS

MODEL	DESCRIPTION	WEIGHT
FOR 12" WIDE LOCKERS		
33357 ¹	Sloping hood - for 12" wide lockers - 15" deep - one wide	3 lbs.
33359 ¹	Sloping hood - for 12" wide lockers - 15" deep - three (3) wide	9 lbs.
33353 ¹	Sloping hood - for 12" wide lockers - 18" deep - one wide	3 lbs.
33356 ¹	Sloping hood - for 12" wide lockers - 18" deep - three (3) wide	9 lbs.
33352 ¹	Sloping hood - for 12" wide lockers - 21" deep - one wide	4 lbs.
33354 ¹	Sloping hood - for 12" wide lockers - 21" deep - three (3) wide	12 lbs.
FOR 15" WIDE LOCKERS		
22251 ¹	Sloping hood - for 15" wide lockers - 18" deep - one wide	4 lbs.
22253 ¹	Sloping hood - for 15" wide lockers - 18" deep - three (3) wide	12 lbs.
22252 ¹	Sloping hood - for 15" wide lockers - 21" deep - one wide	5 lbs.
22254 ¹	Sloping hood - for 15" wide lockers - 21" deep - three (3) wide	15 lbs.
22255 ¹	Sloping hood - for 15" wide lockers - 24" deep - one wide	6 lbs.
22257 ¹	Sloping hood - for 15" wide lockers - 24" deep - three (3) wide	18 lbs.
FOR 18" WIDE LOCKERS		
22818 ¹	Sloping hood - for 18" wide lockers - 18" deep - one wide	5 lbs.
22838 ¹	Sloping hood - for 18" wide lockers - 18" deep - three (3) wide	15 lbs.
22811 ¹	Sloping hood - for 18" wide lockers - 21" deep - one wide	6 lbs.
22831 ¹	Sloping hood - for 18" wide lockers - 21" deep - three (3) wide	18 lbs.
22814 ¹	Sloping hood - for 18" wide lockers - 24" deep - one wide	7 lbs.
22834 ¹	Sloping hood - for 18" wide lockers - 24" deep - three (3) wide	21 lbs.

SIDE PANELS

MODEL	DESCRIPTION	WEIGHT
FOR 15" DEEP LOCKERS		
33330 ¹	Side panel - for 6 feet high - without sloping hood	15 lbs.
33339 ¹	Side panel - for 6 feet high - with sloping hood	15 lbs.
FOR 18" DEEP LOCKERS		
33333 ¹	Side panel - for 6 feet high - without sloping hood	17 lbs.
33334 ¹	Side panel - for 6 feet high - with sloping hood	17 lbs.
FOR 21" DEEP LOCKERS		
33335 ¹	Side panel - for 6 feet high - without sloping hood	20 lbs.
33336 ¹	Side panel - for 6 feet high - with sloping hood	20 lbs.
FOR 24" DEEP LOCKERS		
22237 ¹	Side panel - for 6 feet high - without sloping hood	25 lbs.
22238 ¹	Side panel - for 6 feet high - with sloping hood	25 lbs.

ADDITIONAL COMPARTMENT SHELVES

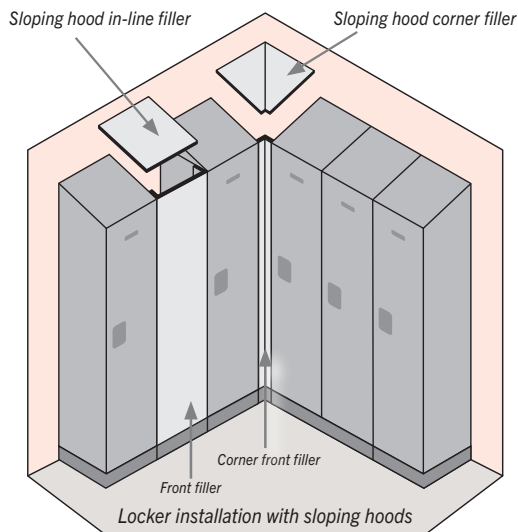
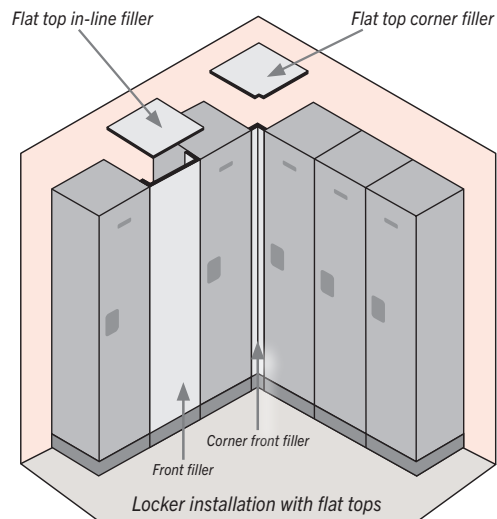
MODEL	DESCRIPTION	WEIGHT
FOR 12" WIDE LOCKERS		
33394	Compartment shelf - for 12" wide lockers - 15" deep - black	3 lbs.
33398	Compartment shelf - for 12" wide lockers - 18" deep - black	4 lbs.
33391	Compartment shelf - for 12" wide lockers - 21" deep - black	4 lbs.
FOR 15" WIDE LOCKERS		
22298	Compartment shelf - for 15" wide lockers - 18" deep - black	4 lbs.
22291	Compartment shelf - for 15" wide lockers - 21" deep - black	5 lbs.
22294	Compartment shelf - for 15" wide lockers - 24" deep - black	5 lbs.
FOR 18" WIDE LOCKERS		
22898	Compartment shelf - for 18" wide lockers - 18" deep - black	5 lbs.
22891	Compartment shelf - for 18" wide lockers - 21" deep - black	6 lbs.
22894	Compartment shelf - for 18" wide lockers - 24" deep - black	6 lbs.

¹ Specify



LOCKER FILLERS

Salsbury locker fillers are an ideal option for locker installations that encounter obstructions such as pipes, columns and other obstacles. Corner and in-line fillers overlay gaps between the existing locker tops and are easily attached providing a finished look to the locker installation. Vertical front fillers provide a professional appearance to the locker installation. Locker fillers can be easily field cut for custom installations.



TOP FILLERS - CORNER

MODEL	DESCRIPTION	WEIGHT
33337 ¹	Flat top filler - corner - for 15" deep lockers	4 lbs.
33338 ¹	Flat top filler - corner - for 18" deep lockers	4 lbs.
33331 ¹	Flat top filler - corner - for 21" deep lockers	5 lbs.
22239 ¹	Flat top filler - corner - for 24" deep lockers	5 lbs.
33377 ¹	Sloping hood filler - corner - for 15" deep lockers	5 lbs.
33378 ¹	Sloping hood filler - corner - for 18" deep lockers	5 lbs.
33371 ¹	Sloping hood filler - corner - for 21" deep lockers	6 lbs.
22279 ¹	Sloping hood filler - corner - for 24" deep lockers	6 lbs.

TOP FILLERS - IN-LINE

MODEL	DESCRIPTION	WEIGHT
33347 ¹	Flat top filler - in-line - 15" wide - for 15" deep lockers	3 lbs.
33348 ¹	Flat top filler - in-line - 15" wide - for 18" deep lockers	3 lbs.
33341 ¹	Flat top filler - in-line - 15" wide - for 21" deep lockers	4 lbs.
22249 ¹	Flat top filler - in-line - 15" wide - for 24" deep lockers	4 lbs.
33387 ¹	Sloping hood filler - in-line - 15" wide - for 15" deep lockers	4 lbs.
33388 ¹	Sloping hood filler - in-line - 15" wide - for 18" deep lockers	4 lbs.
33381 ¹	Sloping hood filler - in-line - 15" wide - for 21" deep lockers	5 lbs.
22289 ¹	Sloping hood filler - in-line - 15" wide - for 24" deep lockers	5 lbs.

FRONT FILLERS - VERTICAL

MODEL	DESCRIPTION	WEIGHT
33369 ¹	Front filler - vertical - 9" wide - 72" high	10 lbs.
33367 ¹	Front filler - vertical - 15" wide - 72" high	15 lbs.
33364	Corner front filler - vertical - black - 72" high	5 lbs.

¹ Specify



gray



blue



black



maple



cherry



mahogany

DESIGNER LOCKER LOCKS / NUMBER PLATES

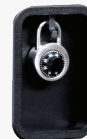
MODEL	DESCRIPTION
33310	Built-in lock - combination style
33311	Master control key - for built-in combination lock #33310
33315	Built-in lock - key style with (2) keys
33315-ADA	ADA compliant lock - key style with (2) key and (2) ADA key heads
33316	Master control key - for built-in key lock #33315
33399	Key blanks - for #33315 built-in locks - box of (50)
33320	Padlock - combination style
33321	Master control key - for combination padlock #33320
33325	Padlock - key style with (2) keys
33329	Key blanks - for #33325 key padlocks - box of (50)
33390	Electronic lock - factory installed (specify: black or silver finish)
33393	Custom lock installation - lock provided by owner
33395	Resettable combination lock (specify: black or silver finish)
33396	Master control key - for resettable combination lock #33395
33360	Custom engraved number plates - 2-1/4" W x 1-1/8" H



#33310



#33320



Sample recessed hasp with combination padlock (#33320) displayed



#33315



#33395



Sample recessed hasp with resettable combination lock (#33395) in silver finish displayed



#33325



#33390



Sample electronic lock (#33390) in silver finish displayed

12