

18" Wide Designer Lockers

Triple Tier & Four Tier

18" WIDE DESIGNER WOOD LOCKERS TRIPLE TIER AND FOUR TIER

Constructed of industrial grade particleboard and covered with durable high pressure laminate, Salsbury 18-23000 and 18-24000 series 18" wide triple tier and four tier designer wood lockers offer ample space for personal storage needs and are ideal for settings where a professional environment is desired. These spacious 18" wide designer wood lockers feature a gray, blue, black, maple, cherry or mahogany finish and are available in 18", 21" and 24" depths. Optional matching laminated sloping hoods and side panels easily attach to 18" wide designer lockers and provide a finished look to an individual locker or a row of lockers. 18" wide designer wood lockers include a 4" high black base and measure six (6) feet high (add 4" for the base). All locker doors are 18" W x 3/4" D and include a black name / number plate (custom engraving #33360 is available as an option upon request). All locker doors also include heavy duty concealed hinges and a lift up handle and recessed hasp for added security – built-in locks (#33310 for combination and #33315 for key), padlocks (#33320 for combination and #33325 for key), electronic locks (#33390) and resettable combination locks (#33395) are available as options upon request. One wide designer lockers are available as fully assembled units only. Three (3) wide designer lockers are also available as fully assembled units only and require minor assembly - see all designer locker options and locks on page 78-79.

DESIGNER LOCKER OPTIONS

SLOPING HOOD
SIDE PANEL

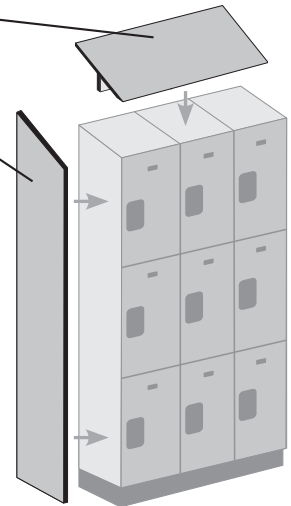
Note: Optional sloping hoods and side panels are sold separately.

Each **triple tier designer** locker compartment includes a 5" deep shelf and a double prong ceiling hook.

Each **four tier designer** locker compartment is unobstructed for maximum storage space.

Compartment sizes:

- 16-3/4" W for all lockers
- 22-3/4" H for all triple tier lockers
- 17" H for all four tier lockers
- 16-3/4" D for all 18" deep lockers
- 19-3/4" D for all 21" deep lockers
- 22-3/4" D for all 24" deep lockers



(Triple Tier Displayed)

Note: It is recommended that all lockers be wall and/or floor anchored.

See **ALL designer locker options and locks on pages 78-79**
See **ALL benches on pages 104-109**

**Volume Discount Pricing
Available at Lockers.com!**



#18-24361's with optional sloping hoods (#22831), side panels (#33336), combination padlocks (#33320), engraved name / number plates (#33360) and designer locker benches (#77788D) displayed

TRIPLE TIER LOCKERS

18" WIDE TRIPLE TIER - SIX FEET HIGH - ONE WIDE

MODEL	UNIT SIZE	WEIGHT	PRICE
ONE WIDE - (76" H with base)		Compartment Size*: 16-3/4" W x 22-3/4" H	
18-23168 ¹	18" W x 72" H x 18" D	125 lbs.	\$450.00
18-23161 ¹	18" W x 72" H x 21" D	140 lbs.	\$480.00
18-23164 ¹	18" W x 72" H x 24" D	155 lbs.	\$510.00



18-23161



18-23361

18" WIDE TRIPLE TIER - SIX FEET HIGH - THREE WIDE

MODEL	UNIT SIZE	WEIGHT	PRICE
THREE WIDE - (76" H with base)		Compartment Size*: 16-3/4" W x 22-3/4" H	
18-23368 ¹	54" W x 72" H x 18" D	375 lbs.	\$1,230.00
18-23361 ¹	54" W x 72" H x 21" D	420 lbs.	\$1,310.00
18-23364 ¹	54" W x 72" H x 24" D	465 lbs.	\$1,390.00

Designer Lockers displayed
h optional side panels
(side panels sold separately)

FOUR TIER LOCKERS

18" WIDE FOUR TIER - SIX FEET HIGH - ONE WIDE

MODEL	UNIT SIZE	WEIGHT	PRICE
ONE WIDE - (76" H with base)		Compartment Size*: 16-3/4" W x 17" H	
18-24168 ¹	18" W x 72" H x 18" D	130 lbs.	\$480.00
18-24161 ¹	18" W x 72" H x 21" D	145 lbs.	\$510.00
18-24164 ¹	18" W x 72" H x 24" D	160 lbs.	\$540.00



18-24161



18-24361

18" WIDE FOUR TIER - SIX FEET HIGH - THREE WIDE

MODEL	UNIT SIZE	WEIGHT	PRICE
THREE WIDE - (76" H with base)		Compartment Size*: 16-3/4" W x 17" H	
18-24368 ¹	54" W x 72" H x 18" D	390 lbs.	\$1,310.00
18-24361 ¹	54" W x 72" H x 21" D	435 lbs.	\$1,390.00
18-24364 ¹	54" W x 72" H x 24" D	480 lbs.	\$1,470.00

* Compartment depth is 1-1/4" less than overall unit depth.

¹ Specify



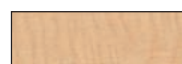
gray



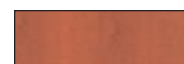
blue



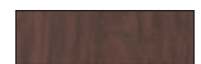
black



maple



cherry



mahogany

Designer Locker Options & Locks

for lockers on pages 58-77



SLOPING HOODS

MODEL	DESCRIPTION	WEIGHT	PRICE
FOR 12" WIDE LOCKERS			
33357 ¹	Sloping hood - for 12" wide lockers - 15" deep - one wide	3 lbs.	\$40.00
33359 ¹	Sloping hood - for 12" wide lockers - 15" deep - three (3) wide	9 lbs.	\$100.00
33353 ¹	Sloping hood - for 12" wide lockers - 18" deep - one wide	3 lbs.	\$45.00
33356 ¹	Sloping hood - for 12" wide lockers - 18" deep - three (3) wide	9 lbs.	\$115.00
33352 ¹	Sloping hood - for 12" wide lockers - 21" deep - one wide	4 lbs.	\$50.00
33354 ¹	Sloping hood - for 12" wide lockers - 21" deep - three (3) wide	12 lbs.	\$125.00
FOR 15" WIDE LOCKERS			
22251 ¹	Sloping hood - for 15" wide lockers - 18" deep - one wide	4 lbs.	\$50.00
22253 ¹	Sloping hood - for 15" wide lockers - 18" deep - three (3) wide	12 lbs.	\$125.00
22252 ¹	Sloping hood - for 15" wide lockers - 21" deep - one wide	5 lbs.	\$60.00
22254 ¹	Sloping hood - for 15" wide lockers - 21" deep - three (3) wide	15 lbs.	\$150.00
22255 ¹	Sloping hood - for 15" wide lockers - 24" deep - one wide	6 lbs.	\$70.00
22257 ¹	Sloping hood - for 15" wide lockers - 24" deep - three (3) wide	18 lbs.	\$175.00
FOR 18" WIDE LOCKERS			
22818 ¹	Sloping hood - for 18" wide lockers - 18" deep - one wide	5 lbs.	\$60.00
22838 ¹	Sloping hood - for 18" wide lockers - 18" deep - three (3) wide	14 lbs.	\$150.00
22811 ¹	Sloping hood - for 18" wide lockers - 21" deep - one wide	6 lbs.	\$70.00
22831 ¹	Sloping hood - for 18" wide lockers - 21" deep - three (3) wide	18 lbs.	\$175.00
22814 ¹	Sloping hood - for 18" wide lockers - 24" deep - one wide	7 lbs.	\$80.00
22834 ¹	Sloping hood - for 18" wide lockers - 24" deep - three (3) wide	21 lbs.	\$200.00

SIDE PANELS

MODEL	DESCRIPTION	WEIGHT	PRICE
FOR 15" DEEP LOCKERS			
33300 ¹	Side panel - for 5 feet high - without sloping hood	15 lbs.	\$90.00
33309 ¹	Side panel - for 5 feet high - with sloping hood	15 lbs.	\$100.00
33330 ¹	Side panel - for 6 feet high - without sloping hood	15 lbs.	\$90.00
33339 ¹	Side panel - for 6 feet high - with sloping hood	15 lbs.	\$100.00
FOR 18" DEEP LOCKERS			
33303 ¹	Side panel - for 5 feet high - without sloping hood	17 lbs.	\$100.00
33304 ¹	Side panel - for 5 feet high - with sloping hood	17 lbs.	\$110.00
33333 ¹	Side panel - for 6 feet high - without sloping hood	17 lbs.	\$100.00
33334 ¹	Side panel - for 6 feet high - with sloping hood	17 lbs.	\$110.00
FOR 21" DEEP LOCKERS			
33305 ¹	Side panel - for 5 feet high - without sloping hood	20 lbs.	\$110.00
33306 ¹	Side panel - for 5 feet high - with sloping hood	20 lbs.	\$120.00
33335 ¹	Side panel - for 6 feet high - without sloping hood	20 lbs.	\$110.00
33336 ¹	Side panel - for 6 feet high - with sloping hood	20 lbs.	\$120.00
FOR 24" DEEP LOCKERS			
22237 ¹	Side panel - for 6 feet high - without sloping hood	25 lbs.	\$120.00
22238 ¹	Side panel - for 6 feet high - with sloping hood	25 lbs.	\$130.00

ADDITIONAL COMPARTMENT SHELVES

MODEL	DESCRIPTION	WEIGHT	PRICE
FOR 12" WIDE LOCKERS			
33394	Compartment shelf - for 12" wide lockers - 15" deep - black	3 lbs.	\$20.00
33398	Compartment shelf - for 12" wide lockers - 18" deep - black	4 lbs.	\$25.00
33391	Compartment shelf - for 12" wide lockers - 21" deep - black	4 lbs.	\$30.00
FOR 15" WIDE LOCKERS			
22298	Compartment shelf - for 15" wide lockers - 18" deep - black	4 lbs.	\$25.00
22291	Compartment shelf - for 15" wide lockers - 21" deep - black	5 lbs.	\$30.00
22294	Compartment shelf - for 15" wide lockers - 24" deep - black	5 lbs.	\$35.00
FOR 18" WIDE LOCKERS			
22898	Compartment shelf - for 18" wide lockers - 18" deep - black	5 lbs.	\$30.00
22891	Compartment shelf - for 18" wide lockers - 21" deep - black	6 lbs.	\$35.00
22894	Compartment shelf - for 18" wide lockers - 24" deep - black	6 lbs.	\$40.00

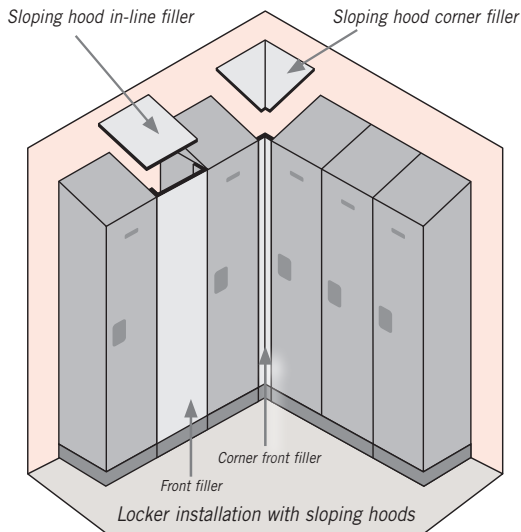
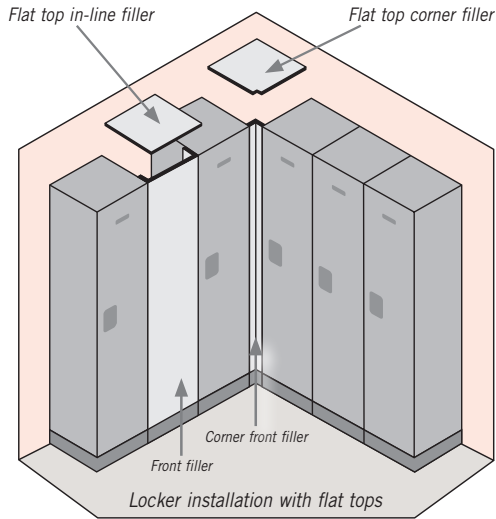
¹ Specify



For ADA Compliance Guidelines Visit:
www.lockers.com/ADA-Designer-Wood-Lockers

LOCKER FILLERS

Salsbury locker fillers are an ideal option for locker installations that encounter obstructions such as pipes, columns and other obstacles. Corner and in-line fillers overlay gaps between the existing locker tops and are easily attached providing a finished look to the locker installation. Vertical front fillers provide a professional appearance to the locker installation. Locker fillers can be easily field cut for custom installations.



TOP FILLERS - CORNER

MODEL	DESCRIPTION	WEIGHT	PRICE
33337 ¹	Flat top filler - corner - for 15" deep lockers	4 lbs.	\$50.00
33338 ¹	Flat top filler - corner - for 18" deep lockers	4 lbs.	\$60.00
33331 ¹	Flat top filler - corner - for 21" deep lockers	5 lbs.	\$70.00
22239 ¹	Flat top filler - corner - for 24" deep lockers	5 lbs.	\$70.00
33377 ¹	Sloping hood filler - corner - for 15" deep lockers	5 lbs.	\$60.00
33378 ¹	Sloping hood filler - corner - for 18" deep lockers	5 lbs.	\$70.00
33371 ¹	Sloping hood filler - corner - for 21" deep lockers	6 lbs.	\$80.00
22279 ¹	Sloping hood filler - corner - for 24" deep lockers	6 lbs.	\$80.00

TOP FILLERS - IN-LINE

MODEL	DESCRIPTION	WEIGHT	PRICE
33347 ¹	Flat top filler - in-line - 15" wide - for 15" deep lockers	3 lbs.	\$40.00
33348 ¹	Flat top filler - in-line - 15" wide - for 18" deep lockers	3 lbs.	\$50.00
33341 ¹	Flat top filler - in-line - 15" wide - for 21" deep lockers	4 lbs.	\$60.00
22249 ¹	Flat top filler - in-line - 15" wide - for 24" deep lockers	4 lbs.	\$60.00
33387 ¹	Sloping hood filler - in-line - 15" wide - for 15" deep lockers	4 lbs.	\$50.00
33388 ¹	Sloping hood filler - in-line - 15" wide - for 18" deep lockers	4 lbs.	\$60.00
33381 ¹	Sloping hood filler - in-line - 15" wide - for 21" deep lockers	5 lbs.	\$70.00
22289 ¹	Sloping hood filler - in-line - 15" wide - for 24" deep lockers	5 lbs.	\$70.00

FRONT FILLERS - VERTICAL

MODEL	DESCRIPTION	WEIGHT	PRICE
33369 ¹	Front filler - vertical - 9" wide - 72" high	10 lbs.	\$80.00
33367 ¹	Front filler - vertical - 15" wide - 72" high	15 lbs.	\$100.00
33364	Corner front filler - vertical - black - 72" high	5 lbs.	\$50.00

¹ Specify



DESIGNER LOCKER LOCKS / NUMBER PLATES

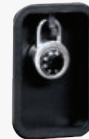
MODEL	DESCRIPTION	PRICE
33310	Built-in lock - combination style	\$15.00
33311	Master control key - for built-in combination lock #33310	\$10.00
33315	Built-in lock - key style with (2) keys	\$15.00
33315-ADA	ADA compliant lock - key style with (2) key and (2) ADA key heads	\$20.00
33316	Master control key - for built-in key lock #33315	\$10.00
33399	Key blanks - for #33315 built-in locks - box of (50)	\$35.00
33320	Padlock - combination style	\$10.00
33321	Master control key - for combination padlock #33320	\$10.00
33325	Padlock - key style with (2) keys	\$10.00
33329	Key blanks - for #33325 key padlocks - box of (50)	\$35.00
33390	Electronic lock (specify: silver, black or gold finish)	\$65.00
33393	Custom lock installation - lock provided by owner	\$10.00
33395	Resettable combination lock (specify: silver or black finish)	\$30.00
33396	Master control key - for resettable combination lock #33395	\$10.00
33360	Custom engraved number plates - 2-1/4" W x 1-1/8" H	\$3.00



#33310



#33315



Sample recessed hasp with combination padlock (#33320) displayed



#33320



#33325



Sample electronic lock (#33390) in silver finish displayed



#33393

For single or multi-use applications.



#33395



Sample recessed hasp with resettable combination lock (#33395) in silver finish displayed