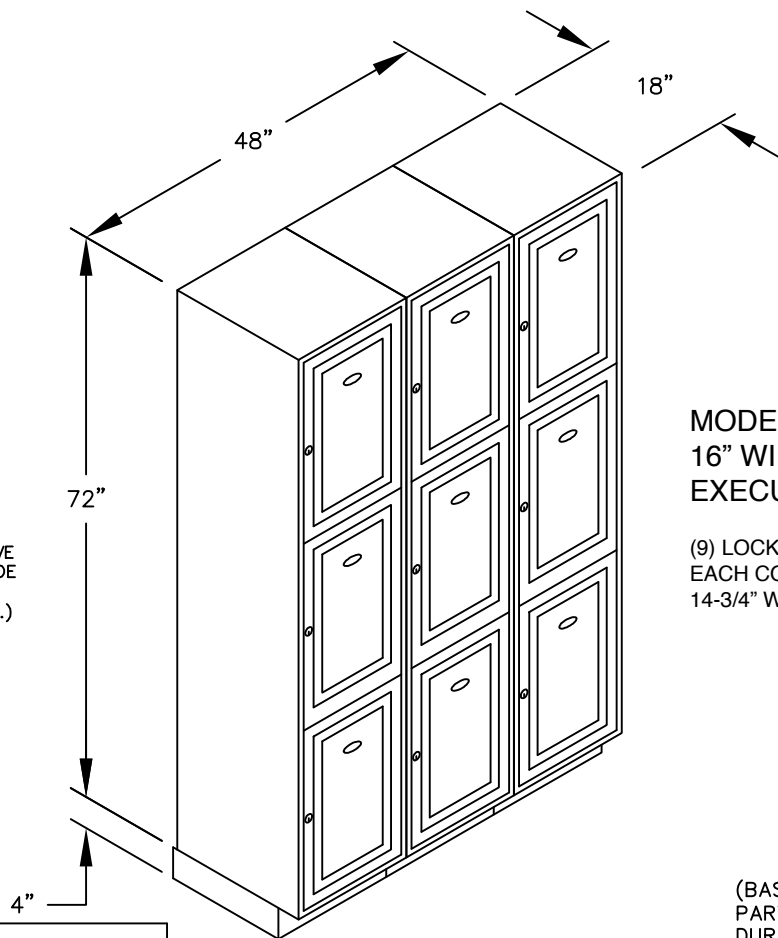


(NOTE: SOLID OAK EXECUTIVE
LOCKER SHOWN WITHOUT SIDE
PANEL OR CROWN MOLDING.
PLEASE ORDER SEPARATELY.)

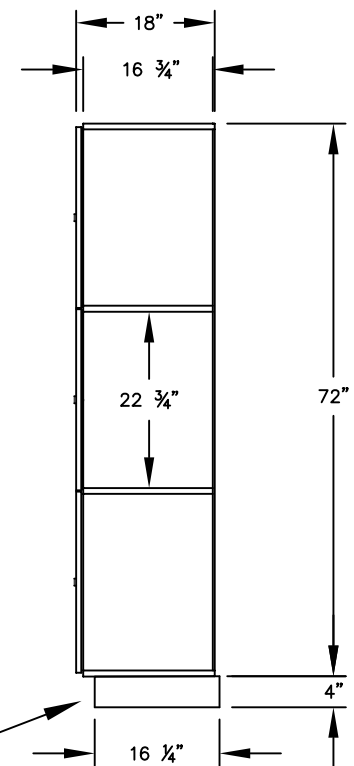


MODEL #13368
16" WIDE TRIPLE TIER SOLID OAK
EXECUTIVE WOOD LOCKER – 3 WIDE

(9) LOCKER COMPARTMENTS
EACH COMPARTMENT:
14-3/4" W x 22-3/4" H x 16-3/4" D

(BASES ARE MADE OF INDUSTRIAL GRADE
PARTICLEBOARD AND ARE COVERED IN A
DURABLE BLACK LAMINATE. PLEASE SET
BASE TO ALLOW 5/8" BETWEEN THE BACK OF
THE LOCKER AND THE WALL FOR AIR
VENTILATION.)

SIDE VIEW



MODEL #13368

16" WIDE TRIPLE TIER
SOLID OAK EXECUTIVE WOOD LOCKER
SIX FEET HIGH (ADD 4" FOR BASE)

AVAILABLE FINISHES:
LIGHT OAK, MEDIUM OAK OR DARK OAK

DRAWN: 3/2020

***Established in 1936, Salsbury Industries is the industry
leader in manufacturing and distributing quality lockers.***

18300 CENTRAL AVENUE
CARSON, CA 90746-4008
PHONE: (800) 562-5377
FAX: (800) 562-5399
email: engineering@lockers.com