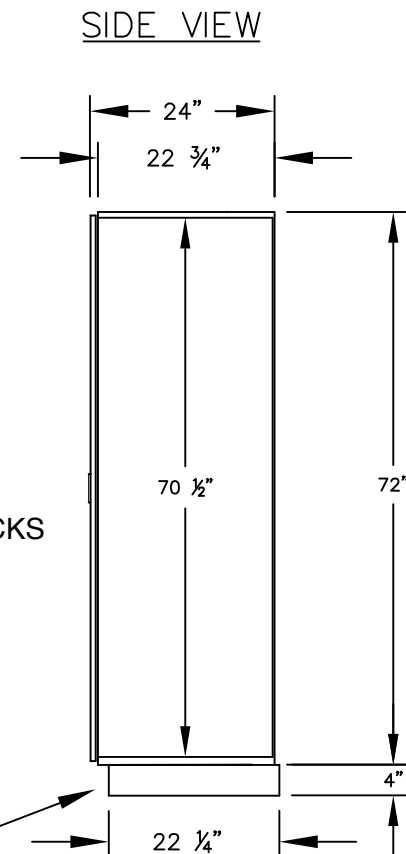


(NOTE: DESIGNER LOCKER  
SHOWN WITHOUT SIDE PANEL  
OR SLOPING HOOD. PLEASE  
ORDER SEPARATELY.)

**MODEL #18-21164-R**  
**18" WIDE SINGLE TIER**  
**DESIGNER WOOD LOCKER – 1 WIDE**  
**WITH RESETTABLE COMBINATION LOCKS**

(1) LOCKER COMPARTMENT  
 EACH COMPARTMENT:  
 16-3/4" W x 70-1/2" H x 22-3/4" D



(BASES ARE MADE OF INDUSTRIAL GRADE  
 PARTICLEBOARD AND ARE COVERED IN A  
 DURABLE BLACK LAMINATE. PLEASE SET  
 BASE TO ALLOW 5/8" BETWEEN THE BACK OF  
 THE LOCKER AND THE WALL FOR AIR  
 VENTILATION.)

**MODEL #18-21164-R**

**18" WIDE SINGLE TIER**  
**DESIGNER WOOD LOCKER**  
**WITH RESETTABLE COMBINATION LOCKS**  
**SIX FEET HIGH (ADD 4" FOR BASE)**

AVAILABLE LOCKER FINISHES: GRAY, BLUE,  
 BLACK, MAPLE, CHERRY OR MAHOGANY

AVAILABLE LOCK FINISHES: BLACK OR SILVERY

DRAWN: 1/2025

***Established in 1936, Salsbury Industries is the industry  
 leader in manufacturing and distributing quality lockers.***

18300 CENTRAL AVENUE  
 CARSON, CA 90746-4008  
 PHONE: (800) 562-5377  
 FAX: (800) 562-5399  
 email: [engineering@lockers.com](mailto:engineering@lockers.com)