

(NOTE: DESIGNER LOCKER  
SHOWN WITHOUT SIDE PANEL  
OR SLOPING HOOD. PLEASE  
ORDER SEPARATELY.)

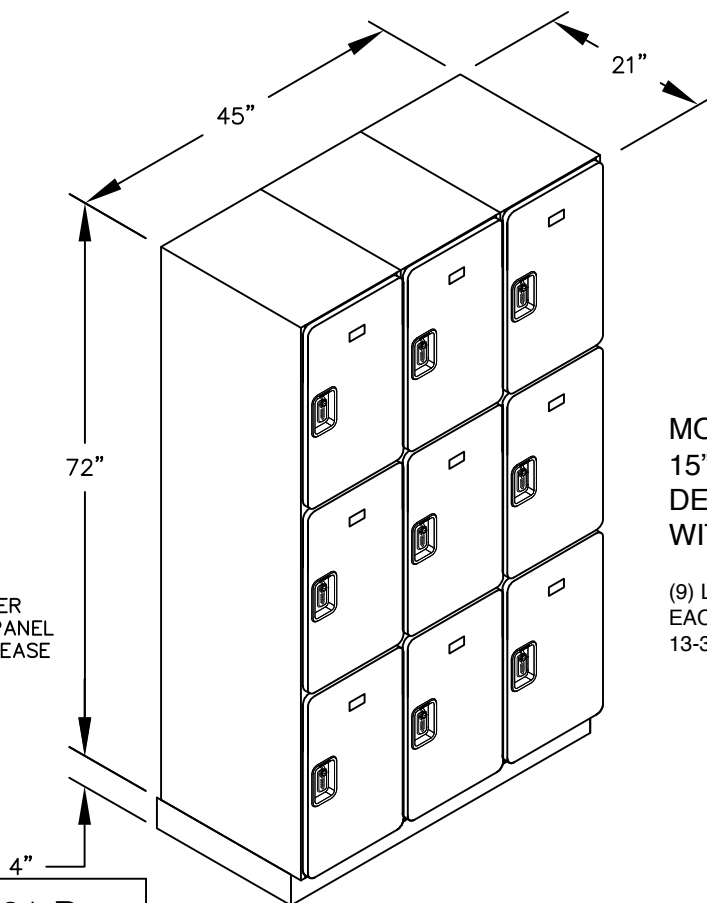
## MODEL #23361-R

15" WIDE TRIPLE TIER  
DESIGNER WOOD LOCKER  
WITH RESETTABLE COMBINATION LOCKS  
SIX FEET HIGH (ADD 4" FOR BASE)

AVAILABLE LOCKER FINISHES: GRAY, BLUE,  
BLACK, MAPLE, CHERRY OR MAHOGANY

AVAILABLE LOCK FINISHES: BLACK OR SILVER

DRAWN: 1/2025

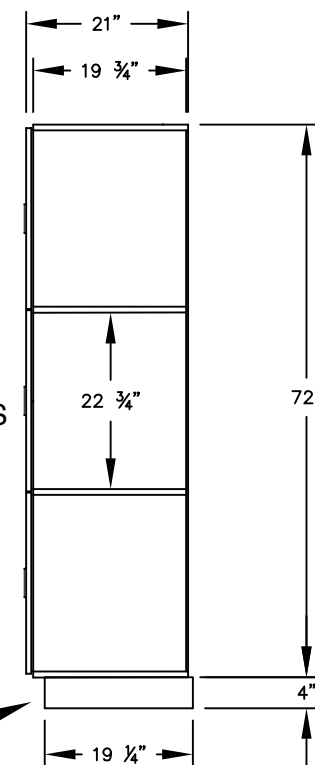


### MODEL #23361-R 15" WIDE TRIPLE TIER DESIGNER WOOD LOCKER – 3 WIDE WITH RESETTABLE COMBINATION LOCKS

(9) LOCKER COMPARTMENTS  
EACH COMPARTMENT:  
13-3/4" W x 22-3/4" H x 19-3/4" D

(BASES ARE MADE OF INDUSTRIAL GRADE  
PARTICLEBOARD AND ARE COVERED IN A  
DURABLE BLACK LAMINATE. PLEASE SET  
BASE TO ALLOW 5/8" BETWEEN THE BACK OF  
THE LOCKER AND THE WALL FOR AIR  
VENTILATION.)

### SIDE VIEW



***Established in 1936, Salsbury Industries is the industry  
leader in manufacturing and distributing quality lockers.***

18300 CENTRAL AVENUE  
CARSON, CA 90746-4008  
PHONE: (800) 562-5377  
FAX: (800) 562-5399  
email: [engineering@lockers.com](mailto:engineering@lockers.com)