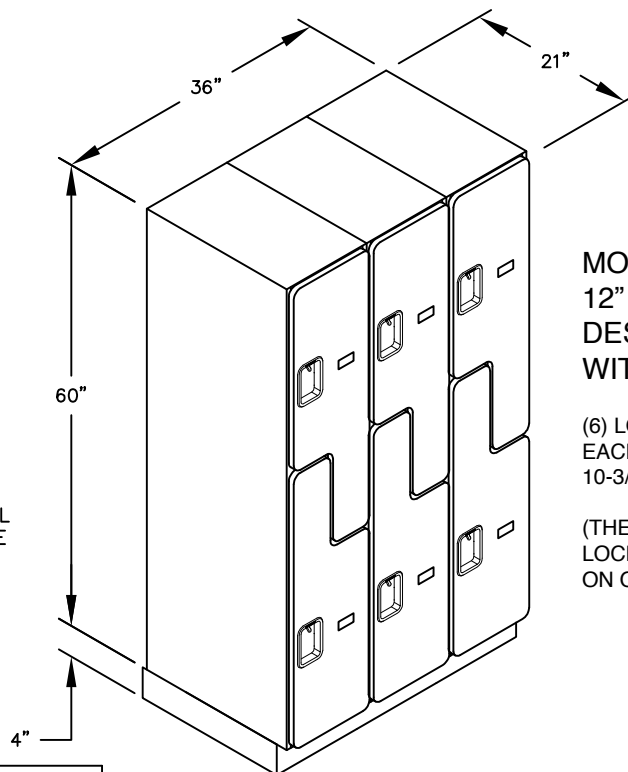


(NOTE: DESIGNER LOCKER
SHOWN WITHOUT SIDE PANEL
OR SLOPING HOOD. PLEASE
ORDER SEPARATELY.)



MODEL #37351-R

12" WIDE DOUBLE TIER 'S' STYLE
DESIGNER WOOD LOCKER
WITH RESETTABLE COMBINATION LOCKS
FIVE FEET HIGH (ADD 4" FOR BASE)

AVAILABLE LOCKER FINISHES: GRAY, BLUE,
BLACK, MAPLE, CHERRY OR MAHOGANY

AVAILABLE LOCK FINISHES: BLACK OR SILVER

DRAWN: 1/2025

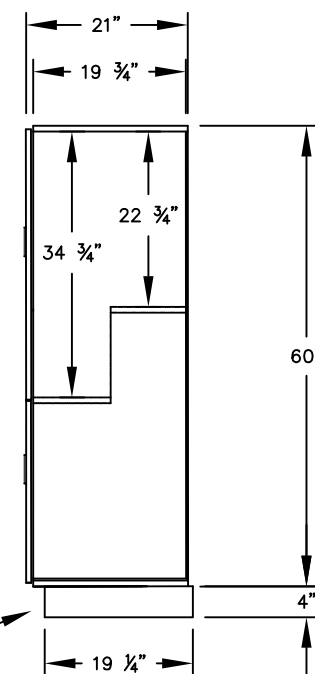
MODEL #37351-R 12" WIDE DOUBLE TIER 'S' STYLE DESIGNER WOOD LOCKER – 3 WIDE WITH RESETTABLE COMBINATION LOCKS

(6) LOCKER COMPARTMENTS
EACH COMPARTMENT:
10-3/4" W x 34-3/4" H x 19-3/4" D

(THE DOUBLE TIER 'S' STYLE DESIGNER
LOCKER INCREASES EACH COMPARTMENT
ON ONE SIDE TO ACCOMMODATE GARMENTS.)

(BASES ARE MADE OF INDUSTRIAL GRADE
PARTICLEBOARD AND ARE COVERED IN A
DURABLE BLACK LAMINATE. PLEASE SET
BASE TO ALLOW 5/8" BETWEEN THE BACK OF
THE LOCKER AND THE WALL FOR AIR
VENTILATION.)

SIDE VIEW



***Established in 1936, Salsbury Industries is the industry
leader in manufacturing and distributing quality lockers.***

18300 CENTRAL AVENUE
CARSON, CA 90746-4008
PHONE: (800) 562-5377
FAX: (800) 562-5399
email: engineering@lockers.com