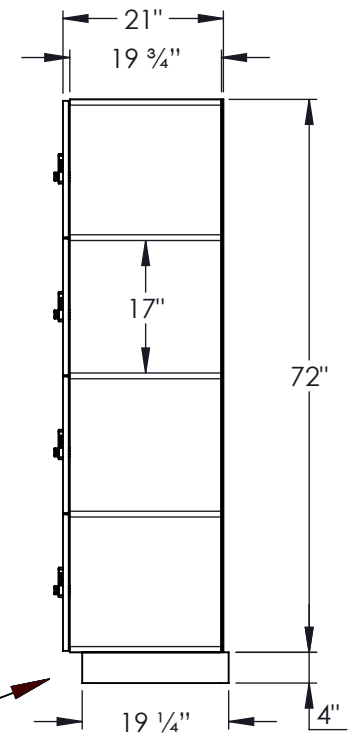


MODEL #44161-R  
12" WIDE FOUR TIER  
PREMIER WOOD LOCKER – 1 WIDE  
WITH RESETTABLE COMBINATION LOCKS

(4) LOCKER COMPARTMENTS  
EACH COMPARTMENT:  
10-3/4" W x 17" H x 19-3/4" D

(NOTE: PREMIER LOCKER SHOWN  
WITHOUT SIDE PANEL OR SLOPING  
HOOD. PLEASE ORDER SEPERATELY.)

## SIDE VIEW



(BASES ARE MADE OF INDUSTRIAL GRADE  
PARTICLEBOARD AND ARE COVERED IN A  
DURABLE BLACK LAMINATE. PLEASE SET BASE  
TO ALLOW 5/8" BETWEEN THE BACK OF THE  
LOCKER AND THE WALL FOR AIR VENTILATION.)

## MODEL #44161-R

12" WIDE FOUR TIER  
PREMIER WOOD LOCKER  
WITH RESETTABLE COMBINATION LOCKS  
SIX FEET HIGH (ADD 4" FOR BASE)

AVAILABLE FINISHES: ARCTIC WHITE, WINTER FOG,  
CARBON MESH, SILVER TEAK, RED OAK, SKYLINE WALNUT

DRAWN: 4/2024

18300 CENTRAL AVENUE  
CARSON, CA 90746-4008  
PHONE: (800) 562-5377  
FAX: (800) 562-5399  
email: [engineering@lockers.com](mailto:engineering@lockers.com)